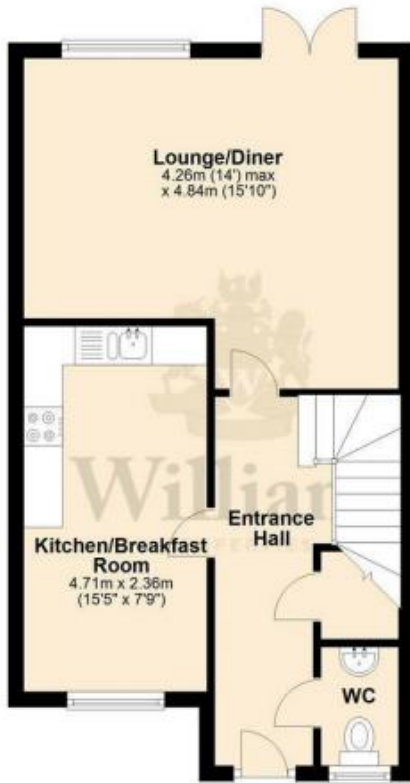


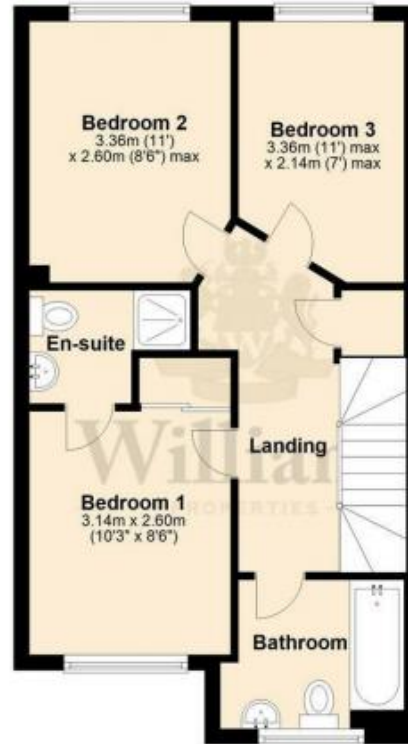
Ground Floor

Approx. 41.7 sq. metres (449.1 sq. feet)



First Floor

Approx. 41.7 sq. metres (449.1 sq. feet)



Total area: approx. 83.4 sq. metres (898.2 sq. feet)

This plan is for layout guidance only. Not drawn to scale unless stated. Windows and door openings are approximate. Whilst every care is taken in the preparation of this plan, please check all dimensions, shapes & compass bearings before making any decisions reliant upon them.

Plan produced using PlanUp.